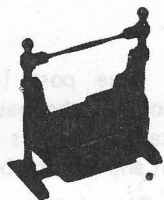


COLLECTORS NO. 40063



Swinging Cradle
Circa 1740-1780

The original of this unique cradle was believed to have been built in the Dutch Hudson Valley sometime between 1740 and 1780. Most cradles were made by a member of the family or a local craftsman and therefore it is difficult to identify their origins exactly.

The proper technical name for this type of cradle is a trestle-suspended cradle. It's construction was more difficult than the traditional rocking cradle and so fewer were made.

This particular cradle, due to the extensive use of turnings, was probably constructed in a fairly well equipped cabinet shop, rather than in a home workshop.

The top spreader served two purposes. It provided structural support for the trestle and also allowed netting to be draped over the cradle to protect a child from insects, or heavier material could be used to protect against drafts.

ASSEMBLY AND FINISHING INSTRUCTIONS



AUTHENTIC REPRODUCTIONS IN MINIATURE

The CRAFTMARK House of Miniature Collectors Series of furniture and accessories have all been carefully researched by specialists through major museum and library collections to assure the highest quality of authenticity in reproduction. Details are extraordinarily accurate to satisfy the most discriminating miniaturist.

All wood parts are machined to assure accurate and precise acceptance of each piece by another.

For a complete catalog of the CRAFTMARK HOUSE OF MINIATURES furniture line and accessories, write to:

THE HOUSE OF
MINIATURES
Customer Service-Catalog Dept.
147 Lake Street
Delaware, OH 43015

Please include \$2.00 for
Postage & Handling.

INTRODUCTION

BEFORE STARTING

Identify and account for each part by placing it on the Layout Sheet (make sure the correct layout sheet is used when working on multi-kit Instruction Sheets). Should any parts be missing, send a post card to:

THE HOUSE OF MINIATURES
Customer Service - Parts Dept.
147 Lake Street
Delaware, OH 43015

Please print Name, Address, Part Number (Number from Layout Sheet) and Kit Name and Number on card when ordering.

SANDING

Before assembly, sand all the outer surfaces of individual parts with 220 grit sandpaper, or finer, sanded in the same direction as the wood grain until the surface is smooth. Take care not to round any edges or corners of the pieces. Finish sanding with 280 grit sandpaper.

PRE-ASSEMBLY

A. After sanding, check the proper location and fit of each part by assembling parts loosely, without gluing. Use the DETAIL VIEWS as a guide.

B. All parts for CRAFTMARK kits are made on precision milling machines. When adjustments are required, sand to fit.

TOOLS AND MATERIALS

- A. The following tools will be helpful in constructing this kit:
1. One-inch Sander
 2. Large Clamp
 3. CRAFTMARK Professional Finishing Kit (or equivalent, see note)
- B. The following materials will be needed to construct this kit:
1. CRAFTMARK Tinted Glue (see note)
 2. Sandpaper-220 and 280 grit
 3. Small Artist's Brush (ent)

NOTE: The CRAFTMARK tinted glue is matched to the finish used in the Professional Finishing Kit. This will produce the authentic finish of the period in which the original Furniture was produced. When not using our glue follow manufacturer's directions.

GLUING

- A. Glue should be applied in small amounts to surface being joined. When gluing dado joints apply glue to dado only.
- B. To ensure a tight fit, squeeze excess glue out of the joints. Hold glued parts together with clamps, rubber bands or weights on the parts.
- C. Wipe off excess glue promptly.
- D. Be sure a glued assembly has dried thoroughly before adding parts.

FINISHING

The CRAFTMARK Professional Finishing Kit enables you to finish your furniture by the same process used by the professional furniture maker. The end result is what is important—there are easier methods, but none that will give the quality results that this process will. If you use a finish other than CRAFTMARK'S refer to the manufacturer's directions.

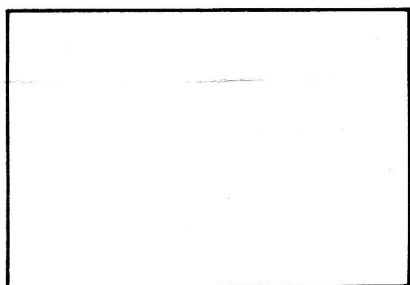
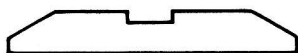
Detail Views

KIT 40063

Layout Sheet

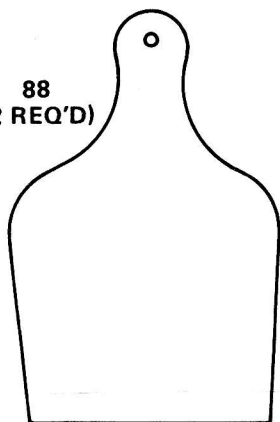


83
(2 REQ'D)

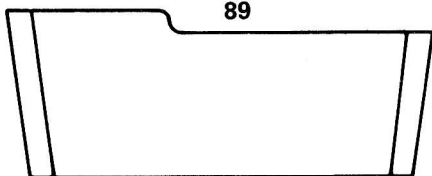


87

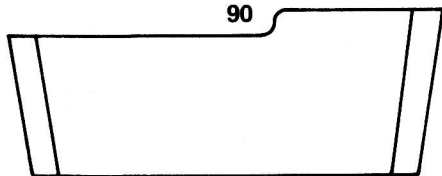
88
(2 REQ'D)



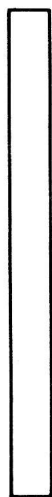
89



90



84



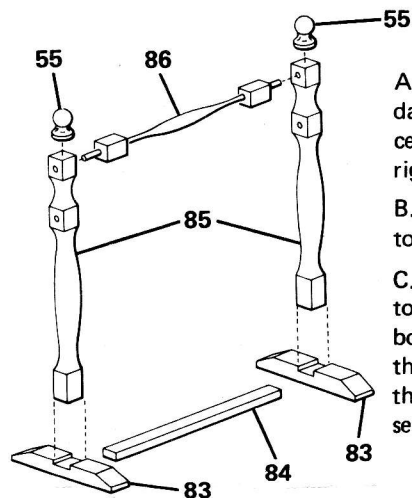
85
(2 REQ'D)



86



Step 1

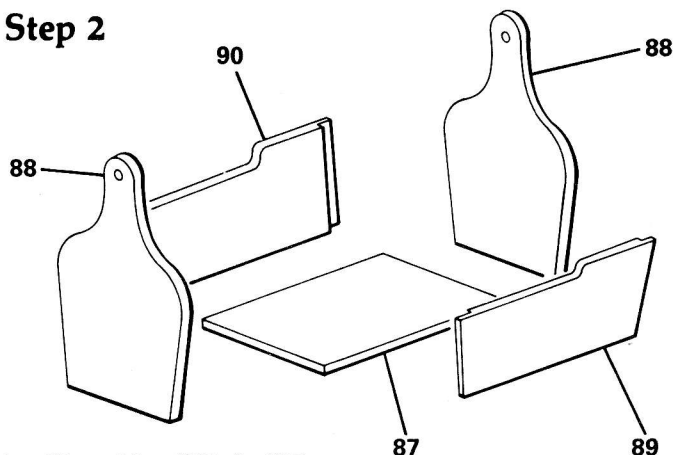


A. Glue post (85) into the dados of the base (83). Make certain that holes in post run at right angle to the base.

B. Glue ball turning (55) to top of post (85).

C. Glue top spreader (86) into top holes in posts (85). Glue bottom spreader (84) between the bases (83). Align assembly so that posts are straight and frame sets level.

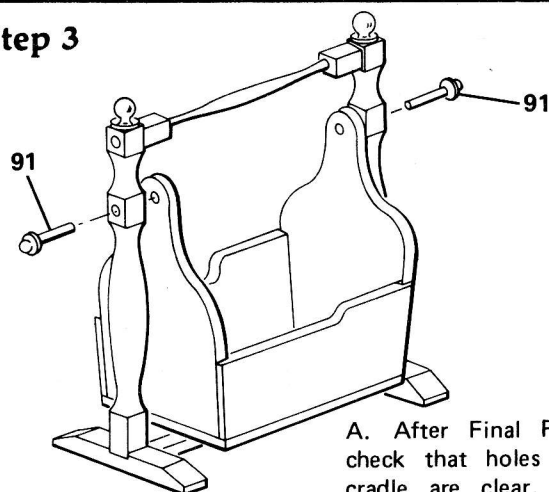
Step 2



A. Glue sides (89) & (90) to ends (88). Glue assembly on top of bottom (87). When glue sets, sand sides and ends flush.

B. Apply Final Finish to both assemblies at this point.

Step 3



A. After Final Finish is dry check that holes in post and cradle are clear. Then install cradle in frame by inserting pivot pins (91).