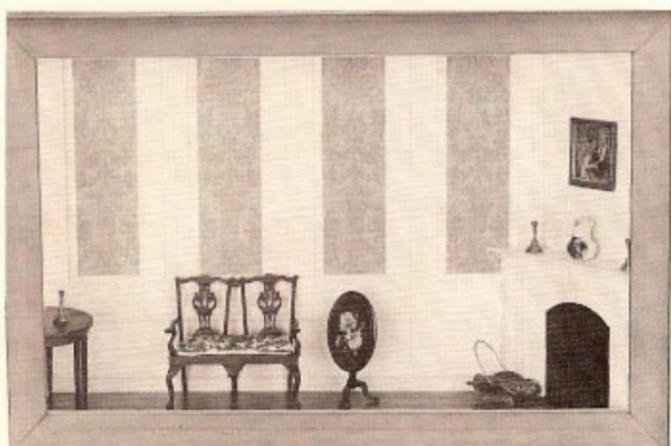


NO. 41205 and 41208 VIGNETTE BOX KIT ASSEMBLY AND FINISHING INSTRUCTIONS



AUTHENTIC REPRODUCTIONS IN MINIATURE

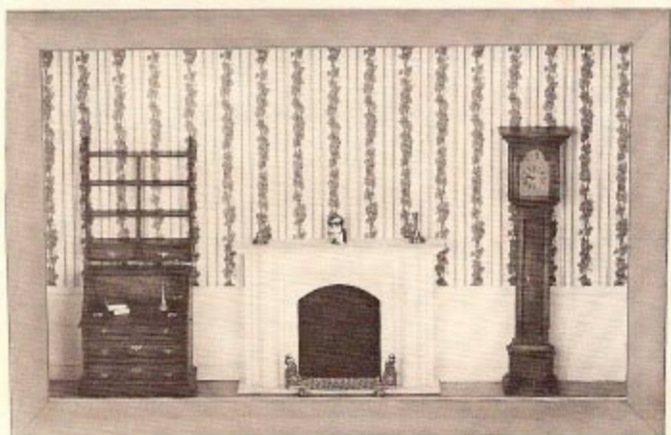


This is your opportunity to build and decorate a beautiful vignette room setting. The room may incorporate any decor features desired. X-ACTO offers a complete line of components and decor items for finishing rooms in the Virginia Tidewater tradition as well as in your own unique taste.

Your vignette kit is precision machined for easy assembly as well as for sturdiness and a quality finish.

For a complete catalog of the X-ACTO House of Miniatures furniture line and accessories, write to:

Please include 1.00 for postage and handling.



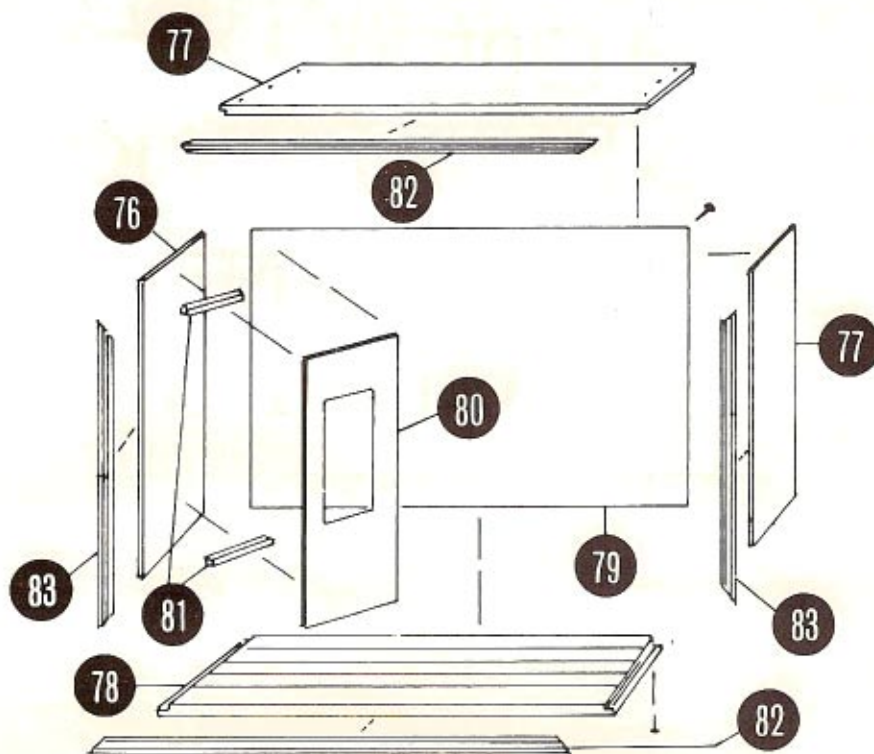
X-ACTO

Contents for Vignette NO. 41205

The following materials are contained in this kit:
Identify and account for each part by comparing them to the following list and exploded layout.

Part No.	Parts List Description	Quantity
78	Base	1
76	Sides	2
77	Top	1
79	Back	1
80	*Window Wall	1
81	*Window Wall, Mtg. Blocks	2
83	Vertical Frame Sides	2
82	Horizontal Frame Sides	2
	3/4" Brads	12
	1/2" Flat Head Nails	8

*NOTE: Use of the window wall is optional when decorating this box.

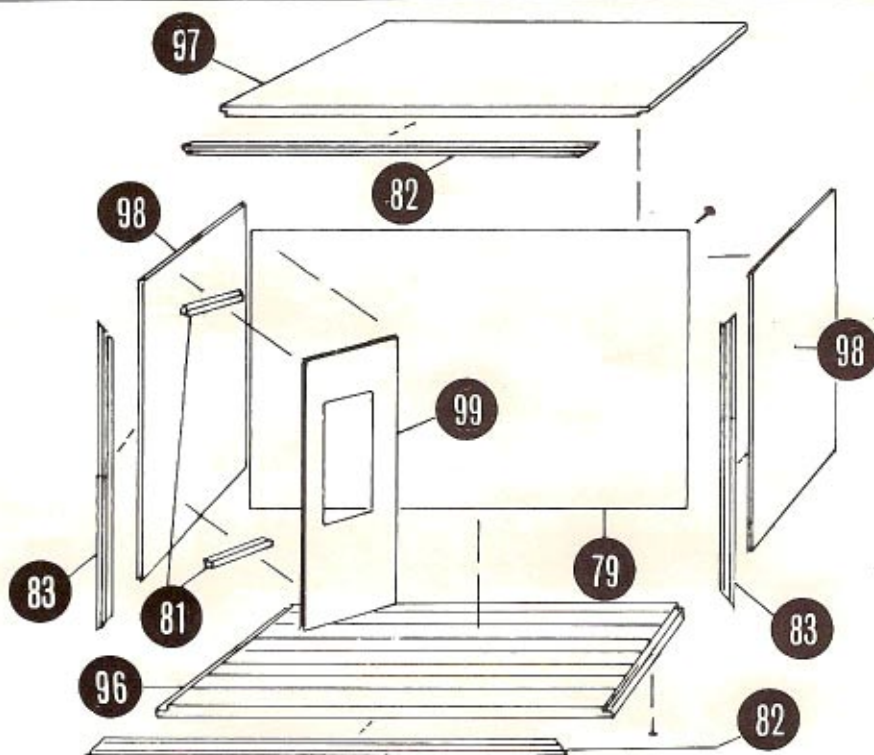


Contents for Vignette NO. 41208

The following materials are contained in this kit:
Identify and account for each part by comparing them to the following list and exploded layout.

Part No.	Parts List Description	Quantity
96	Base	1
97	Top	1
98	Sides	2
79	Back	1
99	*Window Wall	1
81	*Window Wall, Mtg. Blocks	2
83	Vertical Frame Sides	2
82	Horizontal Frame Sides	2
	3/4" Brads	12
	1/2" Flat Head Nails	8

*NOTE: Use of the window wall is optional when decorating this box.



Tools and Materials:

A. The following tools will be helpful in constructing this kit:

1. Two-inch sander (X-ACTO No. 42).
2. Knife (X-ACTO No. 1 with No. 11 Blade)
3. Mitre Box (X-ACTO No. 7533)
4. Razor Saw Set (X-ACTO No. 7535)
5. Ruler, with metal edge.

B. The following tools and materials will be needed to construct this kit:

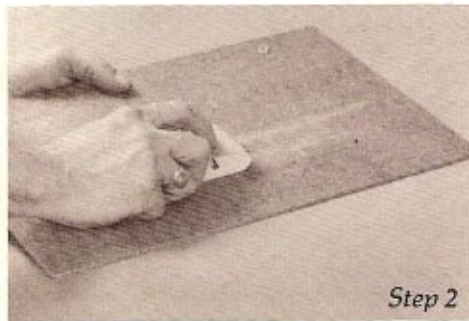
1. Sand paper - 220 grit preferred.
2. Glue - A white glue with a fast setting time.
3. Small hammer
4. Masking tape or large clamps.
5. Waxed paper.

C. The following materials will be needed to complete this room using the window wall.

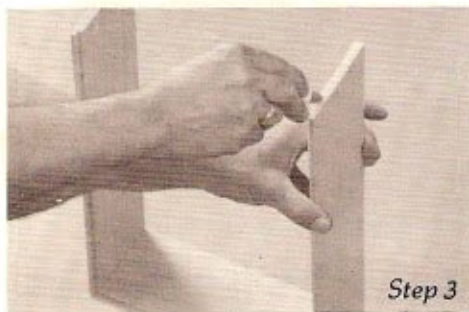
1. Window Kit (X-ACTO No. 41210)
2. Cornice Moulding (X-ACTO No. 43003)
3. Mopboard (X-ACTO No. 43001)
4. Chair Rail (X-ACTO No. 43002)
5. Wallpaper
6. Wallpaper paste
7. Modelers Paints
8. Stain for Floor (X-ACTO No. 43523)



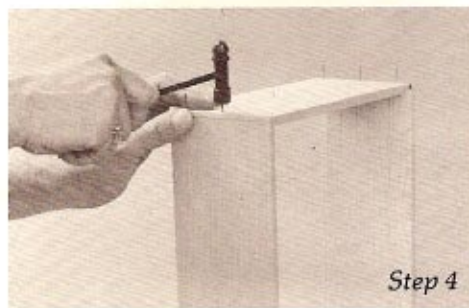
Step 1



Step 2



Step 3



Step 4



Step 5



Step 6

PRE-ASSEMBLY INSTRUCTIONS

Before starting to assemble your Vignette Box Kit, study all instructions and illustrations carefully. Be certain that you understand each step before proceeding to the next one. Follow the sequence of steps in the order they are presented.

Do not skip steps or take short cuts. Photos illustrate assembly on Vignette No. 41205. Assembly of NO. 41208 is identical to this procedure.

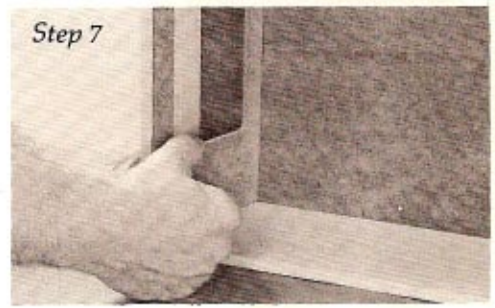
ASSEMBLY INSTRUCTIONS:

The sequence for assembling your Vignette Box Kit is as follows:

1. Sand sides, top & bottom on both sides until smooth and any tool marks are gone. Start with 100 grit garnet paper and then finish with 220 grit garnet paper or finer. For best results use a sanding block.
2. Sand back & window wall smooth side only, with 220 grit garnet paper until sheen is removed from surface. This will allow paint and wall-paper to adhere better.
3. Apply white glue to rabbets at the ends of the top.
4. Using 3-3/4" brads, nail top to the sides. Make certain that non-rabbeted edges, (front edges) are flush.
5. Using 3-3/4" brads, nail top to the floor section. **Do not glue this joint at this time.** Do not drive brads completely in at this time. Leave them extend out 1/8"-1/4" so they can be easily removed later.

Repeat steps 4 and 5 with other side, to complete box frame.

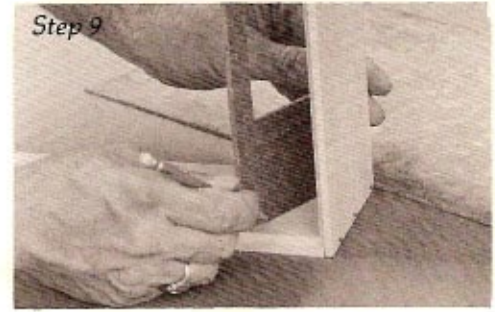
6. Put back, in place and use it to square the frame. **Do not glue at this time.** After glue on top corner joints has set proceed to step 8.
7. (Note: If window wall is not used in your design, skip steps 8, 9, 10 & 11.) Hold back in place and align window wall, in either the left or right corner. Beveled edge fits against back. Front edge should not extend beyond front edge of box. This edge will be covered by frame when box is complete.



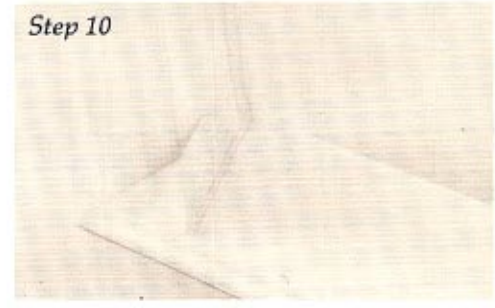
Step 7



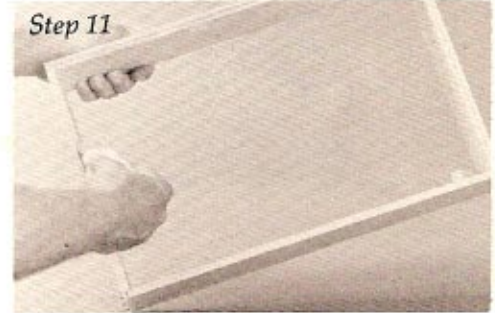
Step 8



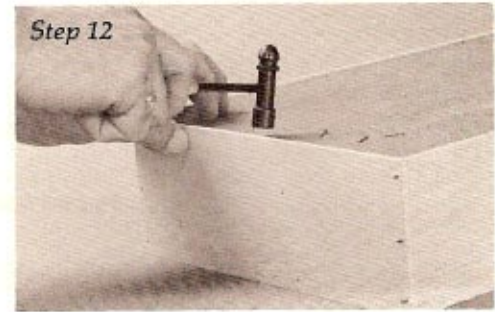
Step 9



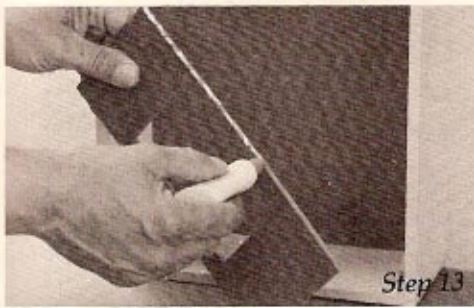
Step 10



Step 11



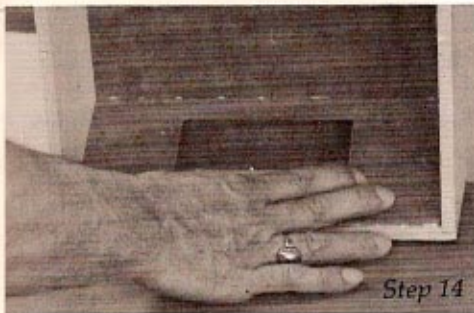
Step 12



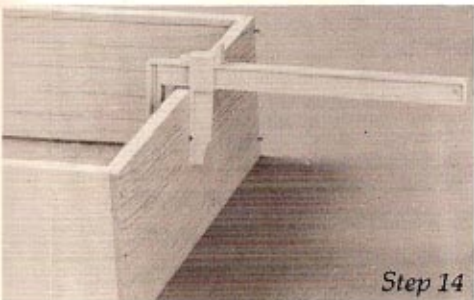
Step 13



Step 13



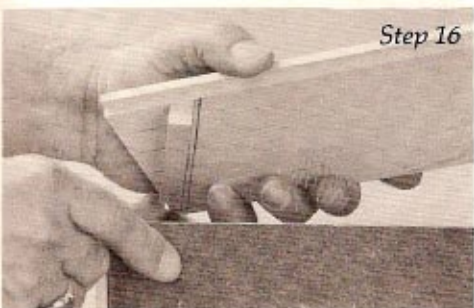
Step 14



Step 14



Step 15



Step 16

8. Use a sharp pencil and mark location of front edge of window wall on floor and ceiling.

9. Remove back. Hold window wall in place against pencil mark and mark back edge of window wall.

10. Glue 1/2" square blocks, in corner top & bottom using rear pencil mark as a guide.

11. Apply glue in rabbets of both sides and top. Do not put glue on floor edge at this time.

12. Put back in place and nail to sides and top using 1/2" flat head nails. Temporarily tack bottom edge in place at this time.

13. If window wall is being used apply glue to edges and top block. Do not glue to floor or block mounted on floor at this time.

14. Set window wall in place and clamp if necessary until glue sets.

15. Check fit of window. Depending on angle of wall and thickness of window frame, it may be necessary to bevel rear edge of frame so that window will seat in opening properly.

16. After installing molding on the interior walls of the box the floor should now be removed and finished separately from the interior walls.

17. After interior is finished to a design of your choice the floor is now glued and nailed in place.

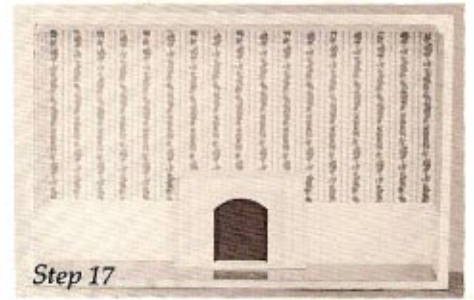
18. Apply glue to front edges of side and floor sections. Do not apply glue to ceiling edge.

19. Put bottom section of frame in place, aligning carefully.

20. Put side frame sections in place using top frame section, to align them properly.

21. Top frame section is not glued in place. This allows glass or plastic window (not provided) to be inserted and removed to facilitate furniture and accessory movement.

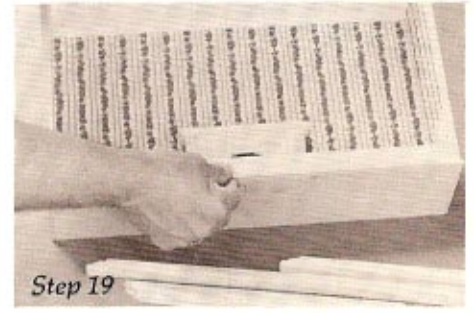
22. Exterior of box may now be finished with a finish of your choice. The wood used in the construction of this box takes a stain or painted finish equally well. Follow manufacturer's directions for the finish you select.



Step 17



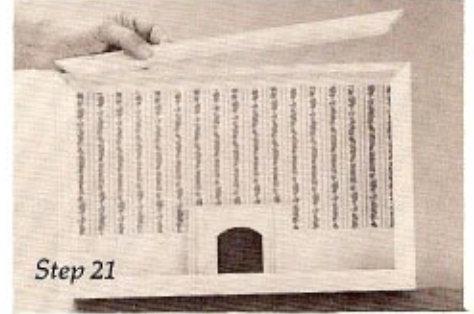
Step 18



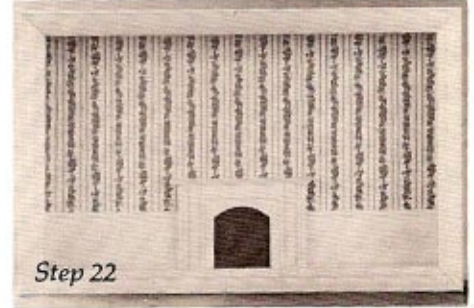
Step 19



Step 20



Step 21



Step 22



AUTHENTIC REPRODUCTIONS IN MINIATURE